

# Sustainability strategy

## Bybanen utbygging

Version 4 – 27.11.2025



Vestland  
fylkeskommune



Photo: Iver Daaland Åse

# Content

Introduction ..... p. 3

Regional development plan for  
Vestland 2024–2028 ..... p. 4

Sustainable social development..... p. 5

Main goals ..... p. 6

1. We create a good journey for everyone.....p. 7

2. We reduce the carbon footprint and adopt robust solutions.....p. 8

3. We recognize our impacts and work to reduce them .....p. 9

4. We promote a safe and serious work life .....p. 10

5. We develop a sustainable supply chain and help lead  
the industry towards a greener direction .....p. 11

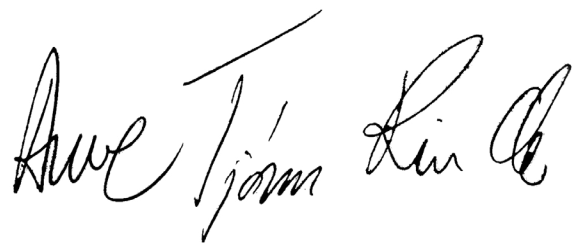
# Introduction

Bybanen utbygging (BU) is a project owner organization under Vestland fylkeskommune. BU’s task is to design and construct the Bergen Light Rail and its associated infrastructure.

A construction phase in the light rail project represents a major public investment. The procurement of consultants and contractors – who in turn procure goods and services from local and international suppliers – creates a value chain with significant impacts. These impacts span all three dimensions of sustainability: climate and environment, social conditions, and economy. As a public project owner, BU has a particular responsibility to promote sustainability throughout the entire value chain.

We expect all suppliers to take an independent responsibility for their own influences.

The responsibility is broad and includes areas such as climate, nature, social conditions, decent working conditions, responsible financial management, and much more. The purpose of this sustainability strategy is to set direction for the important societal mission of building the light rail in Bergen.



**Arve Tjønn Rinde**  
Project Director in Bybanen utbygging



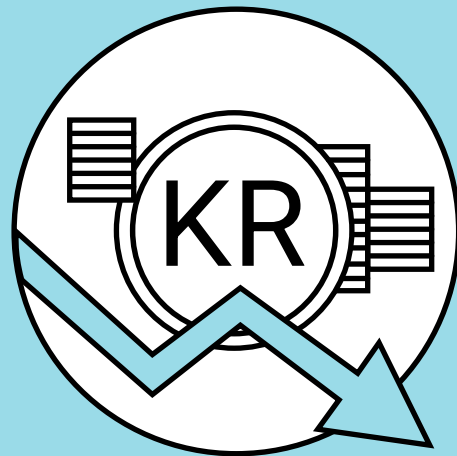
Photo: Morten Wanvik

# Regional development plan for Vestland 2024–2028

The Development Plan for Vestland defines four broad priority areas with main goals for societal development in the period 2024–2028.

The sustainability strategy for Light Rail Development has been prepared to contribute to these main goals.

Area of focus  
**Welfare and value creation**



Vestland is the leading value creation county based on natural advantages

Area of focus  
**Demography and equality**



Vestland is an inclusive county with safe, attractive, and vibrant local communities

Area of focus  
**Climate and nature**



In Vestland, climate and biodiversity are prerequisites for societal development

Area of focus  
**Cooperation**



Vestland achieves its goals through cooperation and coordination

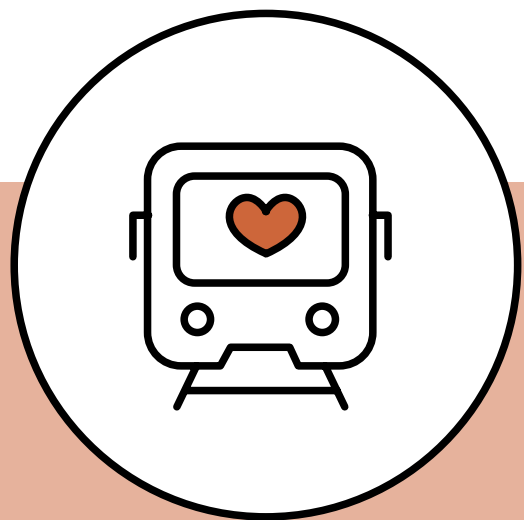
# Sustainable social development

Our work in sustainability is relevant for all aspects of the project. Vestland fylkeskommune uses the sustainability model developed by the Stockholm Resilience Centre. It illustrates the relationship between the sustainability dimensions – environment, social conditions, and economy – across three levels.

This contextual thinking forms the basis for the sustainability strategy in the Light Rail Development project.

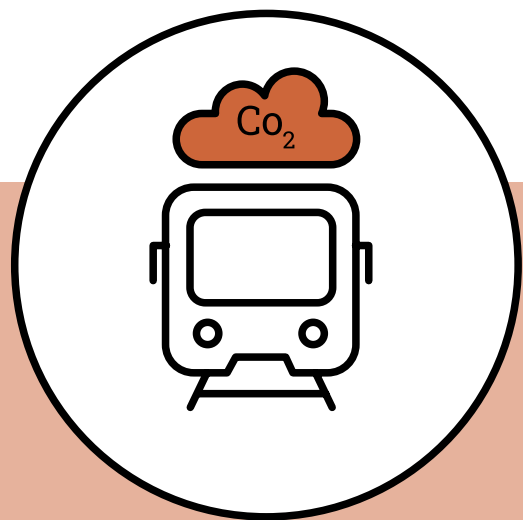


# Main goals



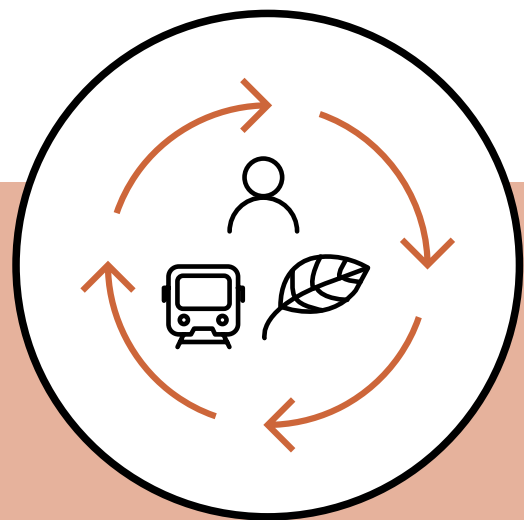
1.

We create a good journey for everyone



2.

We reduce the carbon footprint and adopt robust solutions



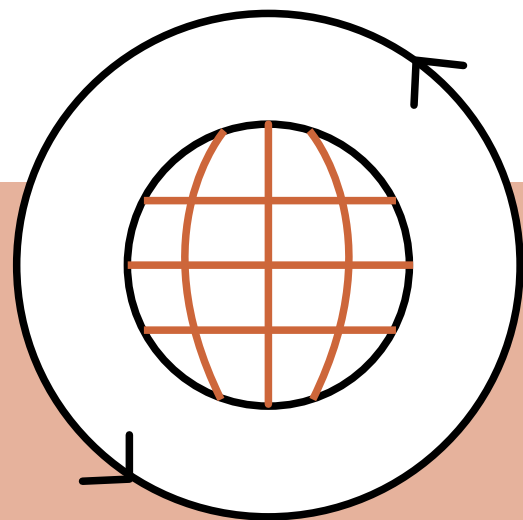
3.

We recognize our impacts and work to reduce them



4.

We promote a safe and serious work life



5.

We develop a sustainable supply chain and help lead the industry towards a greener direction

# 1. We create a good journey for everyone

The Light Rail is the backbone of public transport and urban development in Bergen. The Light Rail is built for its users. Therefore, we put users at the centre, and this principle shall permeate everything we do in planning and construction. The system should be perceived as easy, simple, accessible, and predictable for passengers.

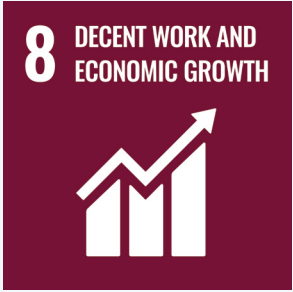
Where the Light Rail is built, neighbourhoods, businesses, and areas grow. The Light Rail must therefore also contribute to high-quality urban spaces and local environments where people live, work, and spend time. To achieve this, the Light Rail must be built with a focus on universal accessibility, safety, and qualities that create a good experience for users and neighbours.

During construction, the city is affected by the work in many ways. Fencing, traffic detours, noise, and dust may create inconveniences for everyday life and for businesses. Well-considered measures combined with timely and clear communication will be essential to reduce this impact.

## Sub-goals

- The brand “Easy, simple, accessible, and predictable” is upheld and strengthened through planning and construction.
- The Light Rail must have an open and readable system, with universal design, making it easy for users to navigate.
- Solutions that are designed and built must consider both current and future surroundings and use the qualities of the Light Rail to uplift the local environment.
- During the construction phase, early and transparent communication shall be provided about planned work and its potential impacts on residents, visitors, and businesses.
- During construction, efforts must be made to reduce impacts on neighbours and the surroundings. Traffic management shall be well planned and must not obstruct critical public services.

## Sustainable Development Goals (SDGs)



# 2. We reduce the carbon footprint and adopt robust solutions

Bybanen is a major transport project with a significant climate footprint. Reducing this requires systematic climate management, reduced material use, documentation of environmental properties, and reuse of materials in both the planning and construction phases.

Direct emissions from energy use on the construction site and from mass transport also constitute a substantial share of the project’s emissions. Vestland has a goal of achieving net zero direct emissions by 2030.

## Sub-goals

- The climate footprint from Light Rail development shall be reduced by at least 20 % in both the planning and construction phases.
- We shall reduce direct greenhouse gas emissions with the goal of net zero by 2030.
- The climate footprint from technical disciplines shall be documented and reduced in BT5.
- Greenhouse gas emissions in the operational phase shall be reduced through the use of durable products and materials, easy maintenance, energy-saving solutions, and local energy production.
- We design and build robust solutions for a changing climate.

## Sustainable Development Goals (SDGs)



# 3. We recognize our impacts and work to reduce them

The development of the Light Rail affects the environment through greenhouse gas emissions, noise, dust, construction traffic, and waste production. For Light Rail Development, it is important to act as a responsible project owner, take responsibility for environmental impacts, and reduce them as much as possible.

We shall safeguard ecological functions, wetland areas systems, and recreational values for people. Where it is possible to choose solutions with the desired function but with less land use and reduced material consumption, this will be the best environmental measure of all.

The construction industry accounts for 26 % of waste production in Norway. Much of this consists of materials and resources that can be reused, repurposed, or recovered into new materials and raw materials. Circular solutions are therefore increasingly important to reduce resource use, waste volumes, and the climate footprint of Light Rail construction.

## Sub-goals

- We comply with laws and regulations and maintain 100 % control of our environmental impacts.
- Natural assets and blue-green structures shall be preserved, reconstructed and improved where possible.
- We base planning and construction on circular economy principles, including reuse, repurposing, and redesigning for future disassembly.
- All types of masses shall be considered a resource. We strive to preserve topsoil and stone, minimise transport distances, and maximise the reuse and recycling of both clean and contaminated masses.
- We will contribute to reducing waste volumes through planning and construction and seek high recycling rates for waste from our contracts.
- We skal reduce the use of plastic in the project and stimulate suppliers to change their practices.

## Sustainable Development Goals (SDGs)



# 4. We promote a safe and serious work life

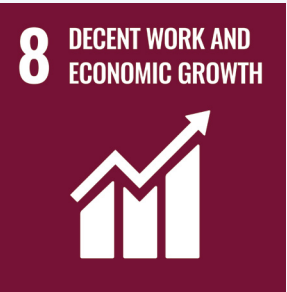
As a public project owner Bybanen utbygging will fulfil its responsibilities regarding working environment, labour rights, human rights, and anti-corruption. This includes combating worker exploitation, fraud and labour market crime.

Supplier compliance with ethical and professional standards shall be predictable, regardless of which entity in Vestland fylkeskommune they work for. Bybanen utbygging and all suppliers shall comply with responsible practices and ethical guidelines, and follow expectations set by society

## Sub-goals

- We will promote proper wages and working conditions in our contracts.
- We will prevent labour market crime and ensure orderly tax and duty practices among our suppliers.
- We will take social responsibility and promote ethical trade in procurement of goods and services.
- Bybanen utbygging will help strengthen vocational education in the construction sector.
- We will facilitate diversity, inclusion, and equality within our own organisation and among our suppliers.

## Sustainable Development Goals (SDGs)



# 5. We develop a sustainable supply chain and help lead the industry towards a greener direction

Bybanen utbygging shall be an attractive project client. We will use procurement as a tool to develop a sustainable supply chain.

Bybanen utbygging will contribute to innovation and development by participating in research collaborations and being open to new solutions and technologies.

Together, we will strengthen the competitiveness of sustainable solutions.

## Sub-goals

- We shall stay updated on the industry and market and collaborate with suppliers to meet current and future needs.
- We shall conduct procurements that make use of the suppliers' expertise and creativity, when it brings added value to our project.
- We shall maintain a proactive attitude toward innovation and development and apply artificial intelligence (AI) where relevant.

## Sustainable Development Goals (SDGs)





bybanenutbygging.no